



Route De Picaterre, Alderney
€535,000









A delightful 3 bedroom house with amazing panoramic sea views.

The property is nestled in it's own grounds in the beautiful bay of Platte Saline. This home is most certainly in a prime location, totally private, and just a 10 minute walk to town.

The home is an upside down house to make the most of the fabulous sea views, the property is over 2,000 sqf.t set out on two floors, the first floor consists of a large lounge with a balcony, the a second study again with a balcony with panoramic sea views overlooking the bay of Platte Saline and the island of Burhou.





The ground floor has a large entrance hall, leading to a fully fitted kitchen, South facing overlooking the front garden, then through to dining room, then to a large conservatory with sea views.

The hall then leads on to a master bedroom and to another double bedroom, then two shower rooms and a utility room.

The house benefits from beautiful established gardens front and back, and a garage. This property must be viewed to be fully appreciated.



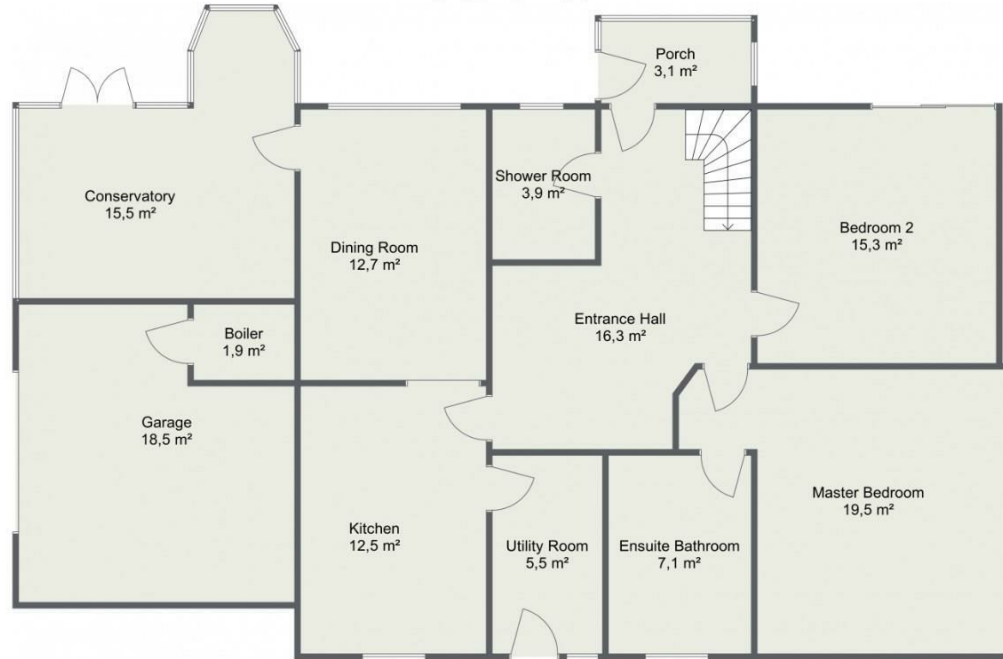








L'Amarrage Ground Floor



L'Amarrage First Floor

