



Simons Way | Alderney | GY9 3TN

€410,000

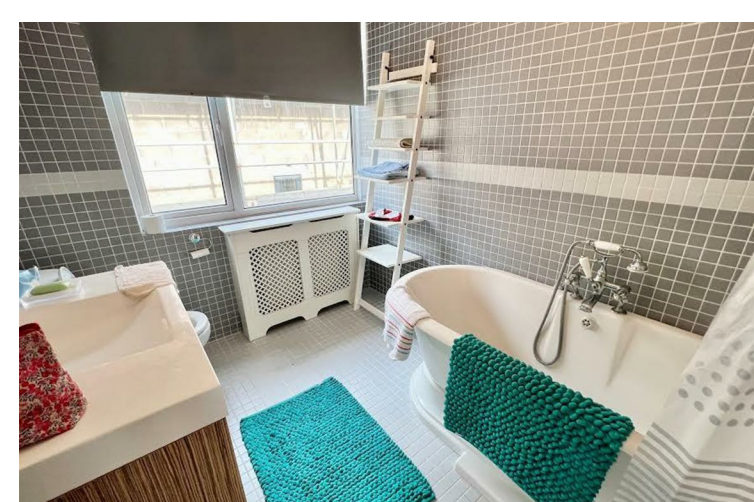
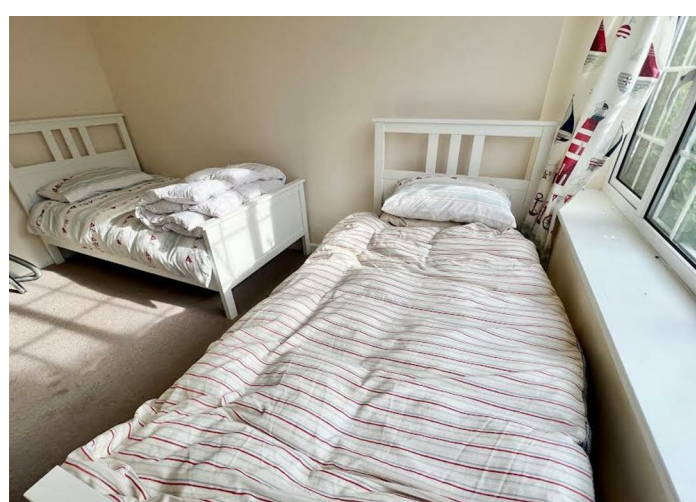
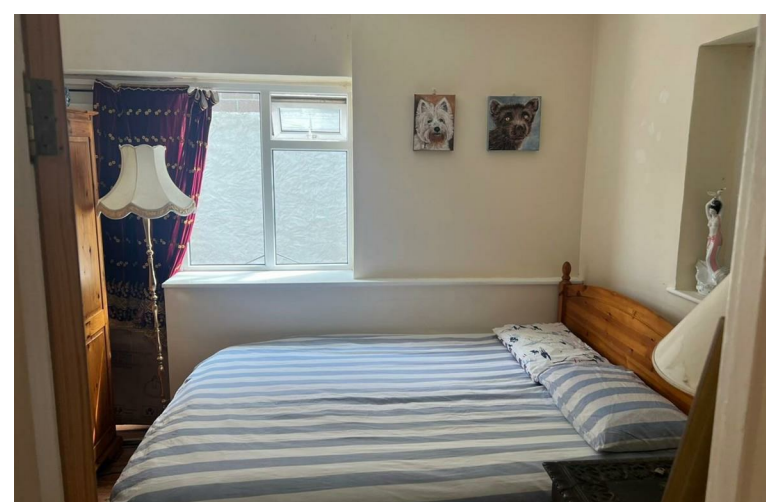




A delightful semi detached 4 bedroom town house. Located in the heart of town within a 5 minute walk of shops, restaurants and bars.

The house comprises a large open plan lounge/dining room with a conservatory. Through to a large galley style kitchen and casual dining.

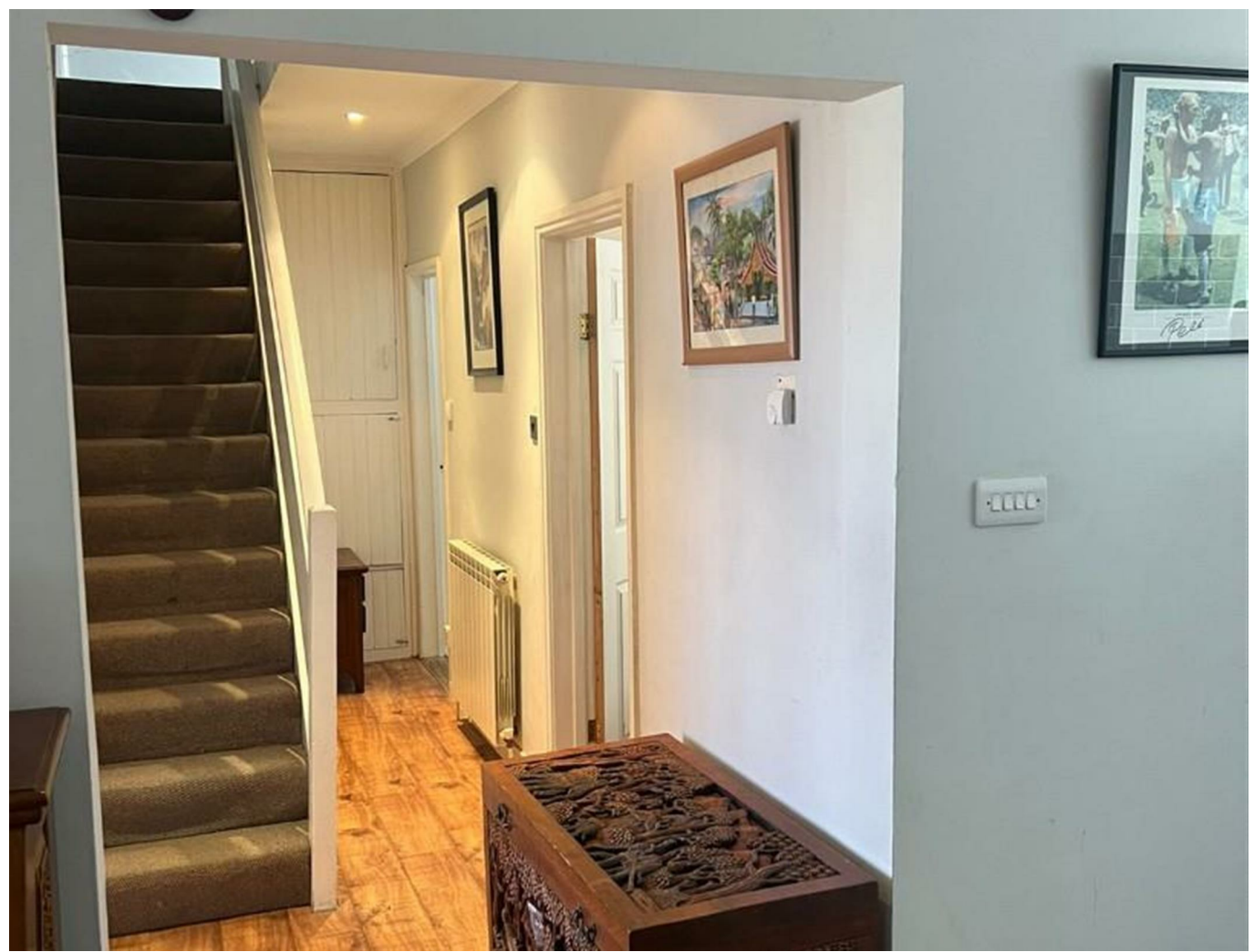
There are also two double bedrooms on the ground floor.



On the first floor are a further two double bedrooms and a family bathroom.

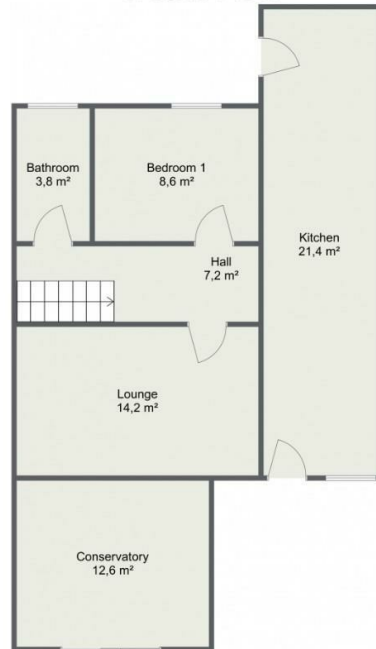
To the exterior is a large decked sun patio leading down to a small garden with a garage.

The property is double glazed and has an oil fired central heating system.

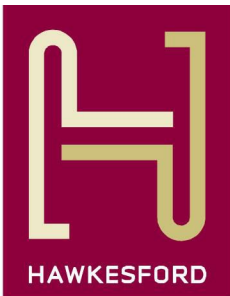
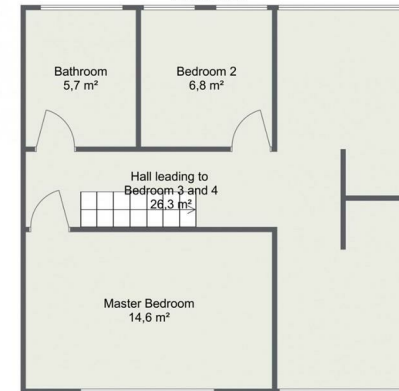




## Green Oak Ground Floor



## Green Oak First Floor



1 The Hughes, 24 - 26 Swan Street, Warwick, CV34 4BJ  
warwick@hawkesford.co.uk

01926 411 480 www.hawkesford.co.uk

IMPORTANT: we would like to inform prospective purchasers that these sales particulars have been prepared as a general guide only. A detailed survey has not been carried out, nor the services, appliances and fittings tested. Room sizes should not be relied upon for furnishing purposes and are approximate. If floor plans are included, they are for guidance only and illustration purposes only and may not be to scale. If there are any important matters likely to affect your decision to buy, please contact us before viewing the property.