



High Street | Aderney | GY9 3TA  
£350,000

*Distinctive  
Collection*





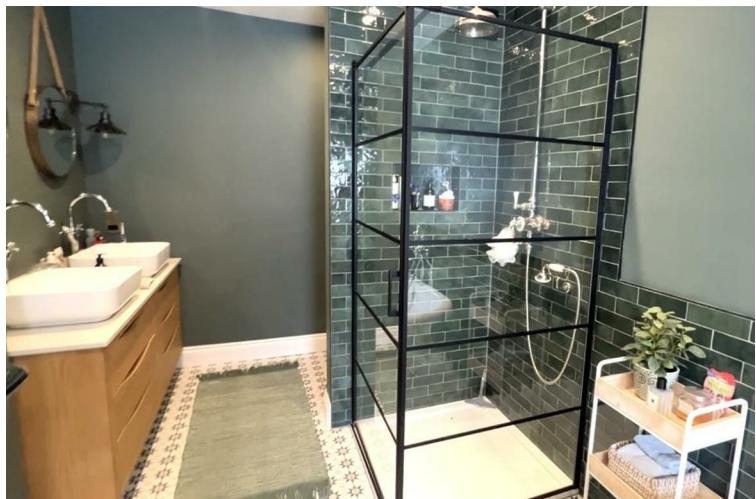
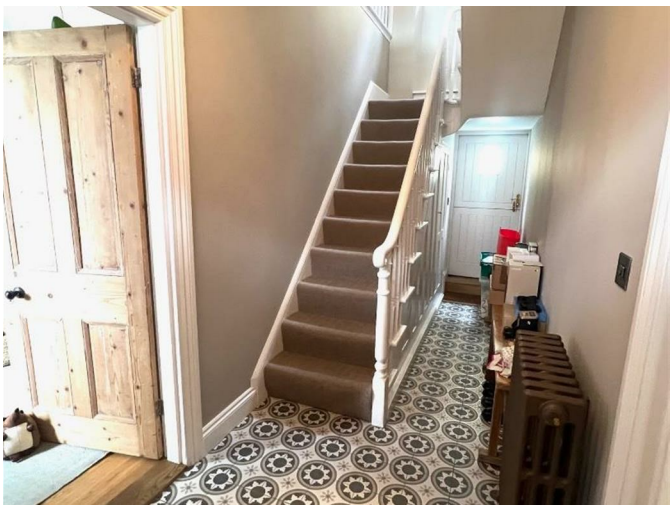


A stunning Town cottage set in the heart of St. Anne, this property has been totally renovated to a very high standard throughout by it's owner, transforming it into into an amazing home !

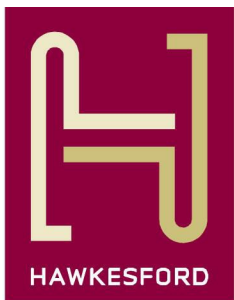
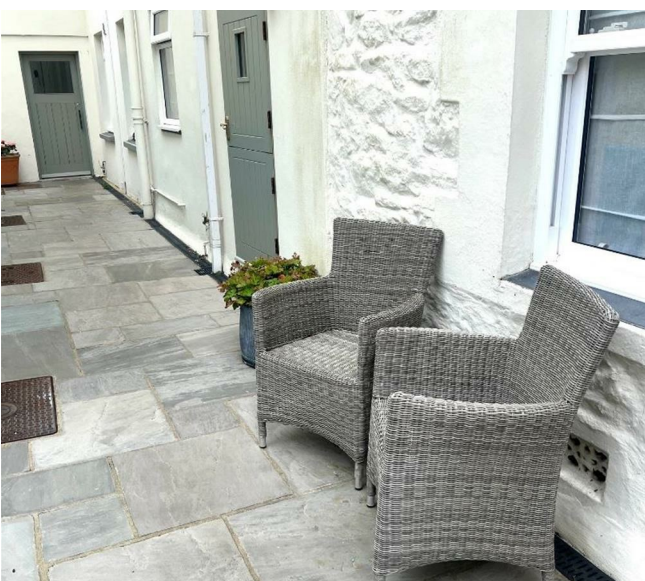
As soon as you enter the hall you sense and appreciate the quality and interior design, a beautiful lounge with a feature fireplace, new victorian style radiators heat all the rooms, a new fully fitted kitchen with casual dining area, the first floor has a superb bedroom with a vaulted ceiling and exposed oak beams, leading into an ensuite bathroom with a luxurious victorian bath, twin wash hand basin's and an art deco crittal glazed shower.

The property has an exterior rear courtyard perfect to catch the afternoon sun.









1 The Hughes, 24 - 26 Swan Street, Warwick, CV34 4BJ  
[warwick@hawkesford.co.uk](mailto:warwick@hawkesford.co.uk)  
**01926 411 480** [www.hawkesford.co.uk](http://www.hawkesford.co.uk)

IMPORTANT: we would like to inform prospective purchasers that these sales particulars have been prepared as a general guide only. A detailed survey has not been carried out, nor the services, appliances and fittings tested. Room sizes should not be relied upon for furnishing purposes and are approximate. If floor plans are included, they are for guidance only and illustration purposes only and may not be to scale. If there are any important matters likely to affect your decision to buy, please contact us before viewing the property.