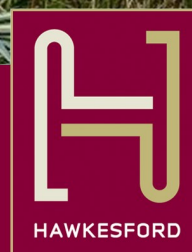




Harewood House, Platte Saline Alderney  
£1,100,000















An amazing opportunity to purchase one of the very few properties in a frontline beach location.

Harewood House has uninterrupted sea views out across Platte Saline Beach and the island of Burhou and beyond. You can see the most amazing sunsets to the West almost every evening.

The entrance to the property is through a large conservatory practically on the beach!

You will experience something quite extraordinary when you live in this beach house....the soothing sound of the waves ebbing and flowing it calms the soul, and add to this the colour of the sea outside is an amazing turquoise blue whatever the weather.

To the rear of the house is a large, secluded, south facing garden which benefits from the sun all day.









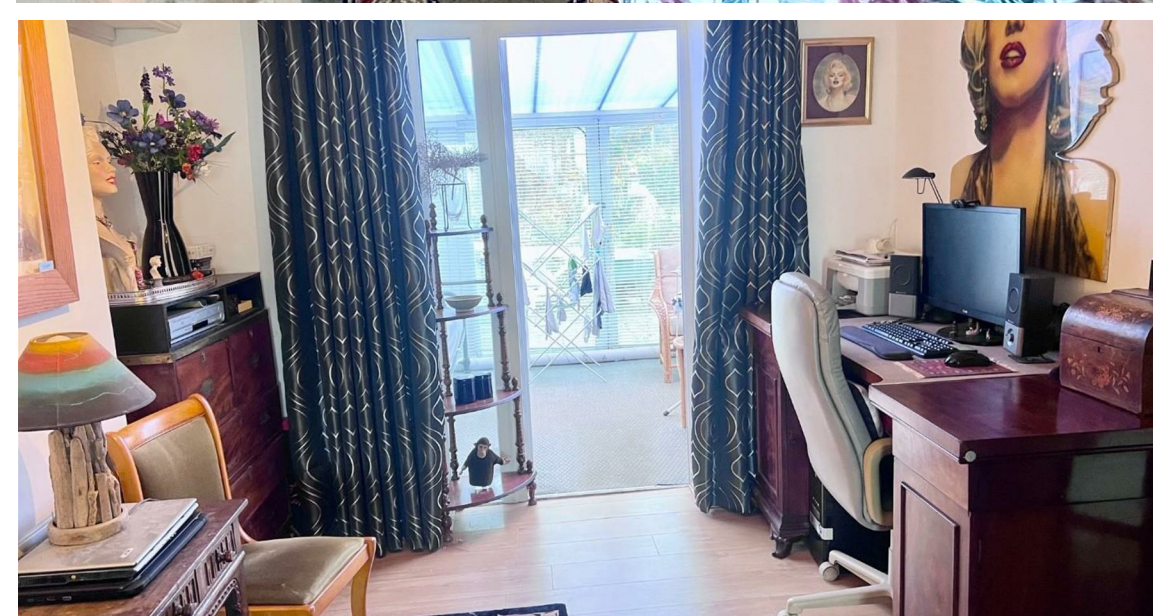


The property boasts a large open plan lounge with a feature fireplace adjoining the sun room.

There is a formal dining room with amazing sea views, a snug lounge and a study leading through to another conservatory to the rear.

There is a fully fitted kitchen with a utility room to the side.

The first floor consists of 4 bedrooms and 2 bathrooms with a magnificent master suite with more sea views and a magnificent vaulted ceiling. This home must be seen to be fully appreciated.







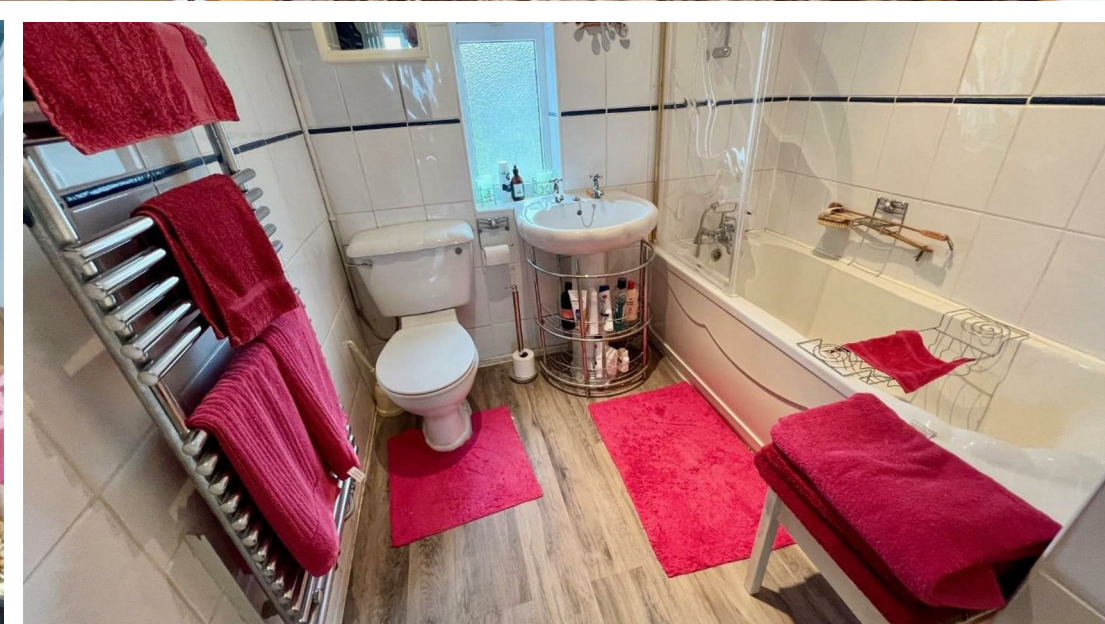
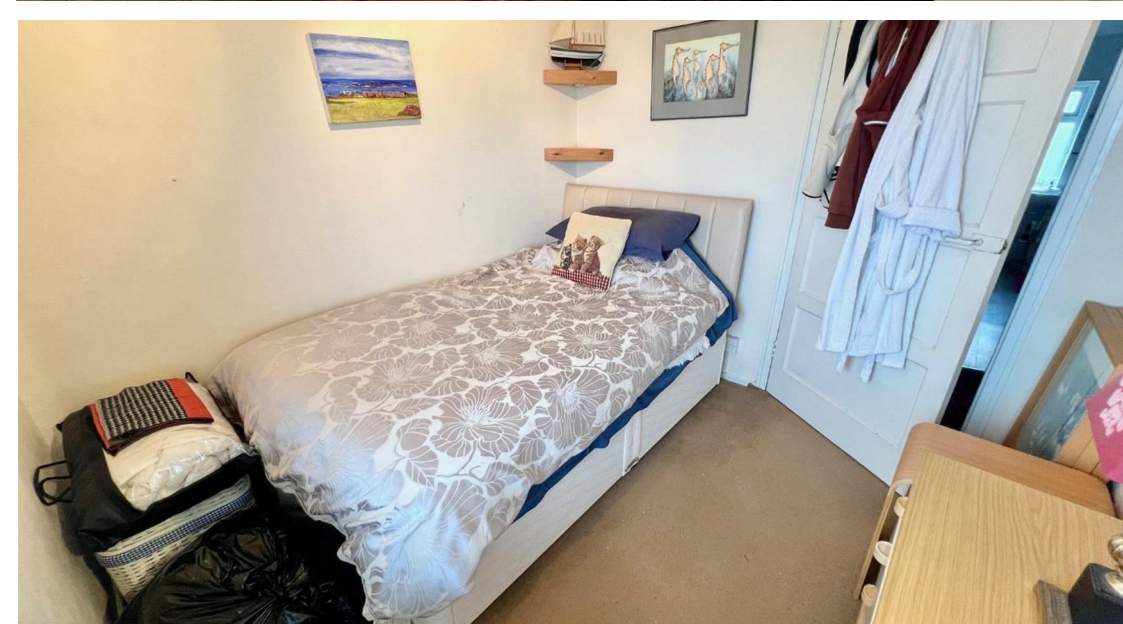






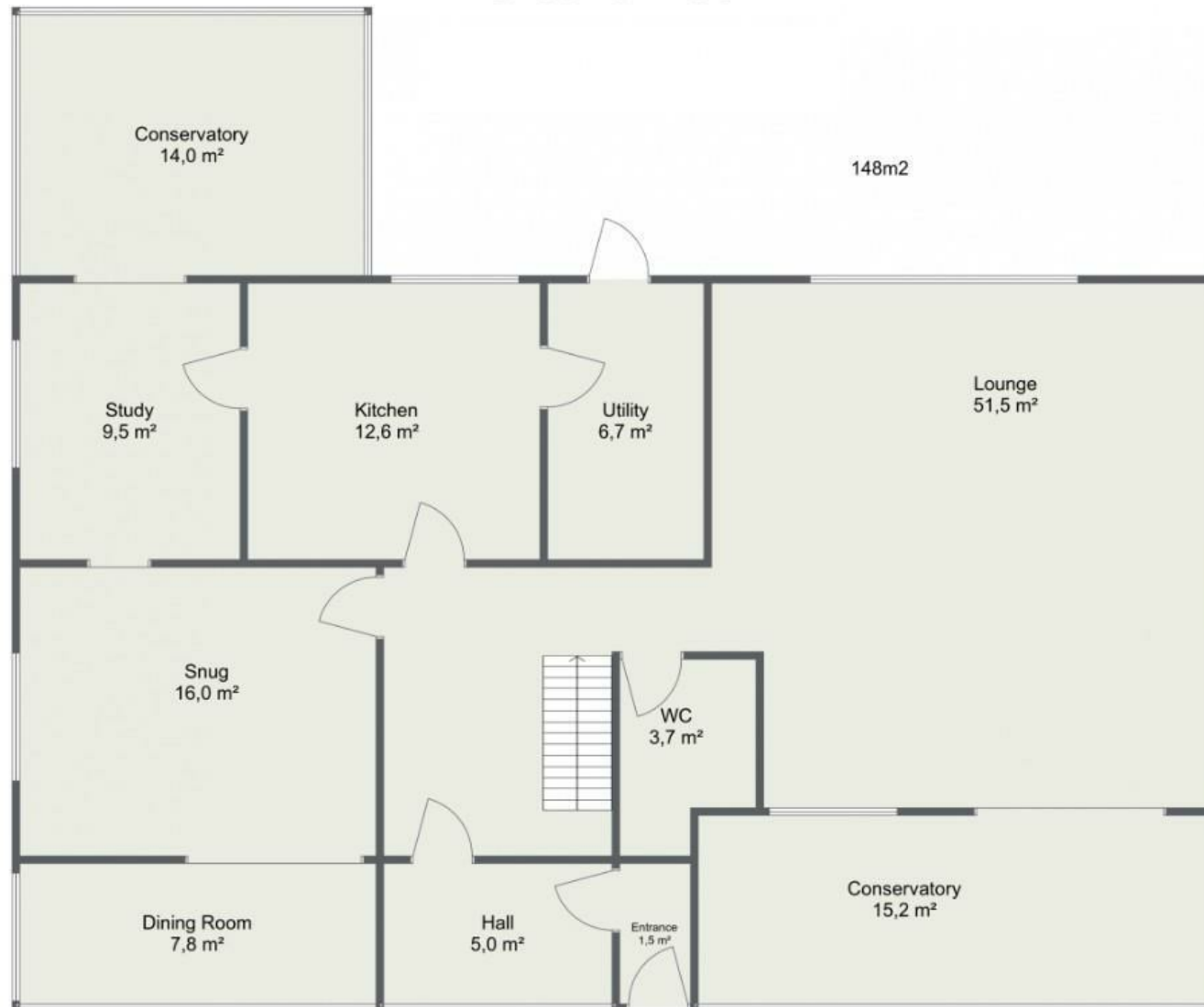








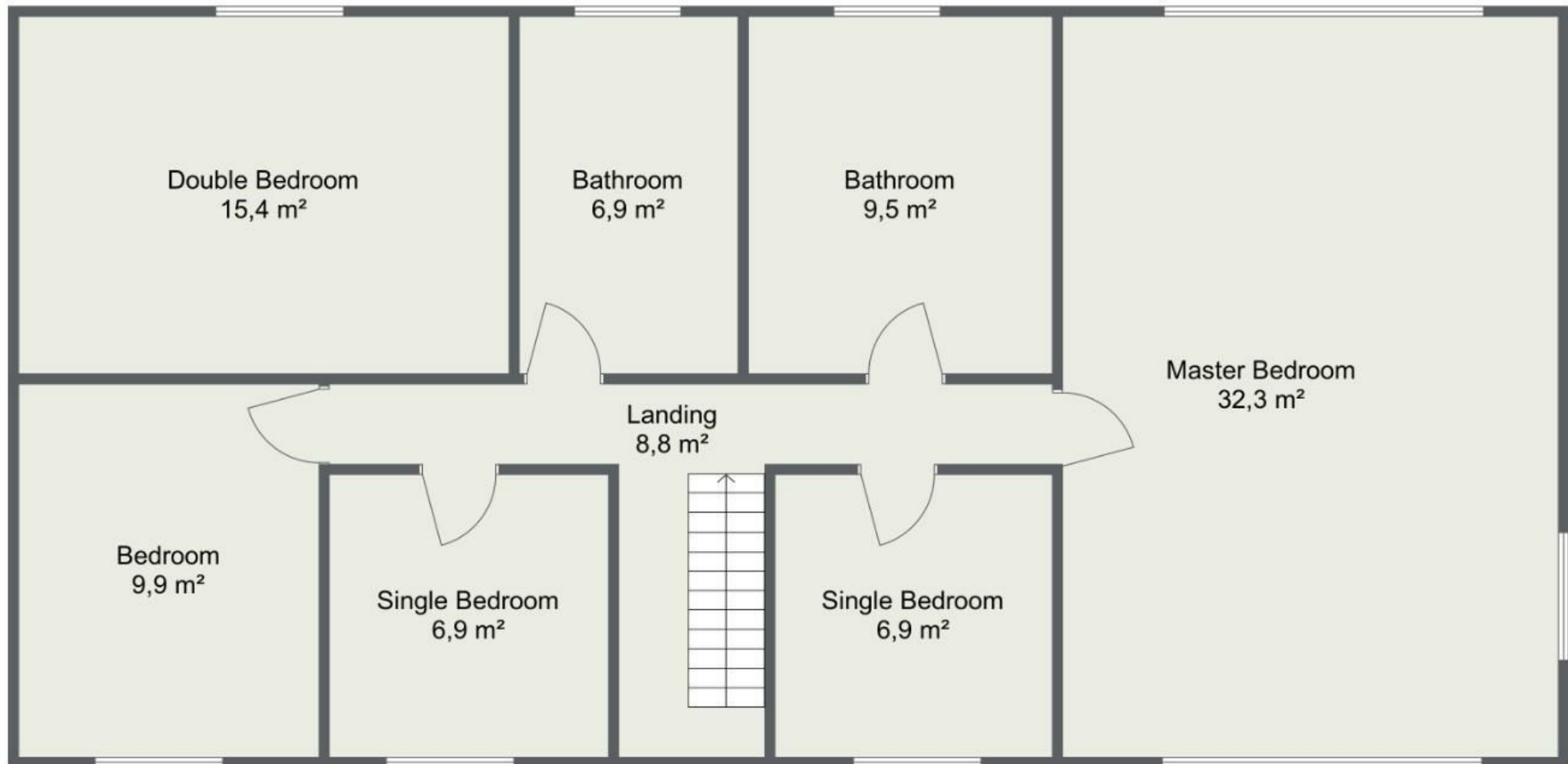
## 6 Alfred Terrace Ground Floor





## 6 Alfred Terrace

### First Floor



100m2